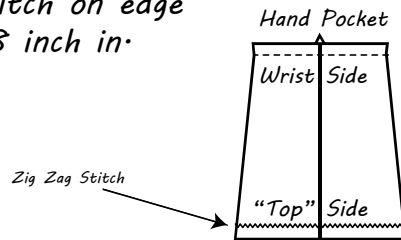


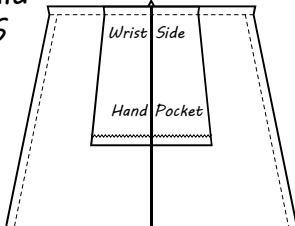
# Pattern 1001, 1002, 1003

## TOP: SLEEVE

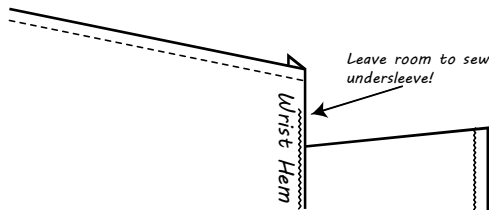
1. Fold over top/long end of hand pocket and zig zag stitch on edge about 1/4-3/8 inch in.



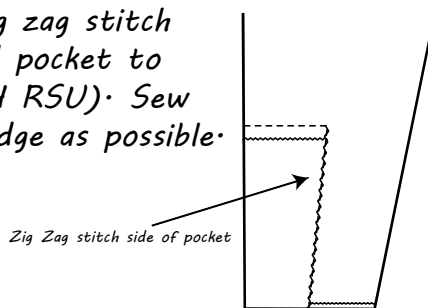
2. Center Hand Pockets on Sleeves, Lining up wrist to the small side of the hand pocket. (Notches should match.) BOTH PIECES RIGHT SIDE UP. Sew together on wrist side. Overlock (or other).



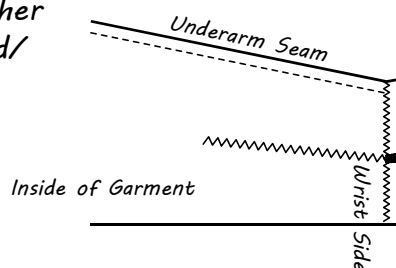
3. Baste and zig zag stitch wrist hem up to sleeve side. Sew starting about 1 inch before sleeve pocket and ending about one inch after sleeve pocket.



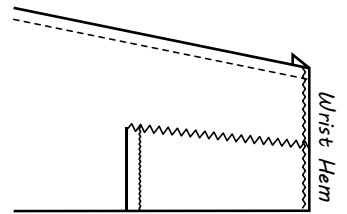
4. Baste and zig zag stitch sides of hand pocket to sleeve (BOTH RSU). Sew as close to edge as possible.



5. Sew Underarm seam. Overlock or other finish if desired/available.

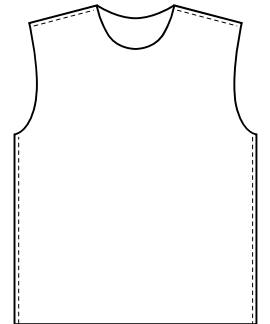


6. Finish Wrist Hem. Zig Zag stitch unstitched length of wrist hem, folding underarm seam to one side.

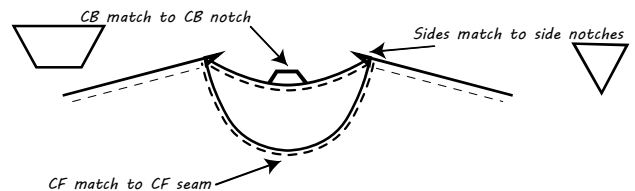


## TOP: BODY

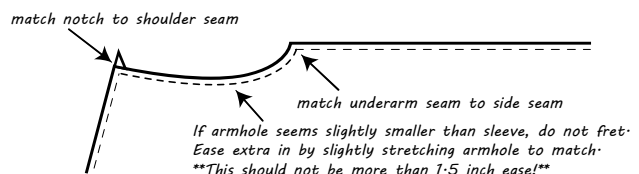
1. Sew Body Front to Back: Side and Shoulder Seams (3/8" SA). Overlock or other finish stitch if desired/available. (Right Sides Together)



2. Sew Hood to Body: Match CB, CF, and notches for side seams. Overlock or other finish stitch if desired/available.



3. Sew Sleeves to Body: Match top notch to shoulder seam. Match side seam to underarm seam. Overlock or other finish stitch if desired/available.



4. Baste and Zig Zag stitch hem of shirt about 3/4-1 inch from edge.

